

***Penduka mobile safaris - see, hear and feel Africa - under canvas and close to wildlife***  
***A true safari – moving as you explore***



## **Combined 7-Day Central Kalahari & 9-Day Botswana Safari**

### **Botswana, Land of Contrasts – Kalahari, Okavango Delta, Chobe River**

Our specialist guide takes you on an adventurous route seldom used by others. You travel from Maun to Passarge Valley, the remote Piper Pan and then finally reach Deception Valley, home to a variety of Kalahari game. Then continue to the Moremi Game Reserve the Savuti Channel, Chobe National Park and Victoria Falls. Listen to the haunting cry of the fish eagle; see herds of elephant and buffalo, tsessebe and zebra as well as all large and small predators. A boating experience on the Chobe River is included. The safari ends with a transfer from Kasane to Victoria Falls or Livingstone. Optional 2-day extensions are available.

<b>Program:</b>	Start Maun, 2 nights Passarge Valley, 2 nights Piper Pan, 2 nights Deception Valley, 1 night Maun in BB, 2 nights Xaxanaka, 2 nights Khwai, 2 nights Savuti, 2 nights Chobe
<b>Duration:</b>	15 nights / 16 days
<b>Classification:</b>	Set-departure safari, fully serviced mobile camping
<b>Pax</b>	Min 4 guests, Max 9, window seat
<b>Accommodation</b>	En-suite tented accommodation, 3 x 3 m Dome Tents
<b>Private Safari - on request:</b>	Can be booked on an exclusive private group basis or luxury safari in meru tents. Cost on application
<b>Activities:</b>	Flight over the Okavango Delta, Game drives, motorboat cruise on Xakanaxa Lagoon, Chobe River sunset cruise
<b>Included</b>	<ul style="list-style-type: none"> <li>• Penduka customized 4 x 4 game viewing vehicle</li> <li>• Penduka mobile tented camp – fully serviced (non-participation) with mess tent, supply truck</li> <li>• Comfortable tented accommodation in Dome tents (3 m x 3 m) with beds, bed linen and towels, bedside table &amp; lamp, paraffin lamp, private en-suite canvas 'bush bathroom' consisting of bucket shower and toilet (usually a chemical toilet)</li> <li>• Services of a professional guide, safari chef, waiter and safari crew</li> <li>• Game drives and park fees</li> <li>• Activities specified in the itinerary</li> <li>• Light aircraft flight (seat rate) from Maun / Xakanaxa</li> <li>• Road transfer to Livingstone or Victoria Falls from Kasane</li> <li>• All meals and drinks while on Penduka mobile tented safari (water, soft drinks, tea &amp; coffee, local wine &amp; beer)</li> <li>• 12% VAT</li> </ul>
<b>Excluded</b>	<ul style="list-style-type: none"> <li>• Travel insurance</li> <li>• Medical insurance</li> <li>• Staff gratuities</li> <li>• Optional safari extensions</li> <li>• Visa fees into Zambia and Zimbabwe</li> <li>• Meals and drinks at hotels unless specified otherwise</li> </ul>
<b>Luggage</b>	Strict luggage restriction of 20 kg SOFT luggage per person, including hand luggage

## Day 1 Central Kalahari – Passarge Valley

Drive Maun - Passarge (270 km, full day drive)

Your Penduka guide will meet you at your guesthouse after breakfast for an early departure to the Central Kalahari.

Arrive at Matswere Gate, where we enter the Central Kalahari Game Reserve. We make our way to the Passarge Valley (all these valleys are old fossil river beds now, with clusters of trees and grass). Passarge Valley is set in the north west of CKGR and was closed until 10yrs ago to the public, the valley smaller than Deception Valley gets its name from a Swedish Botanist called Passarge.

The area is remote and not visited frequently but has good game concentrations if rains fell. In this area Suricate or Meerkat can be found over and above the other Kalahari game species. Chances of seeing giraffe and cheetah are also very good.

Enjoy the first evening and dinner under the African sky and around the campfire.



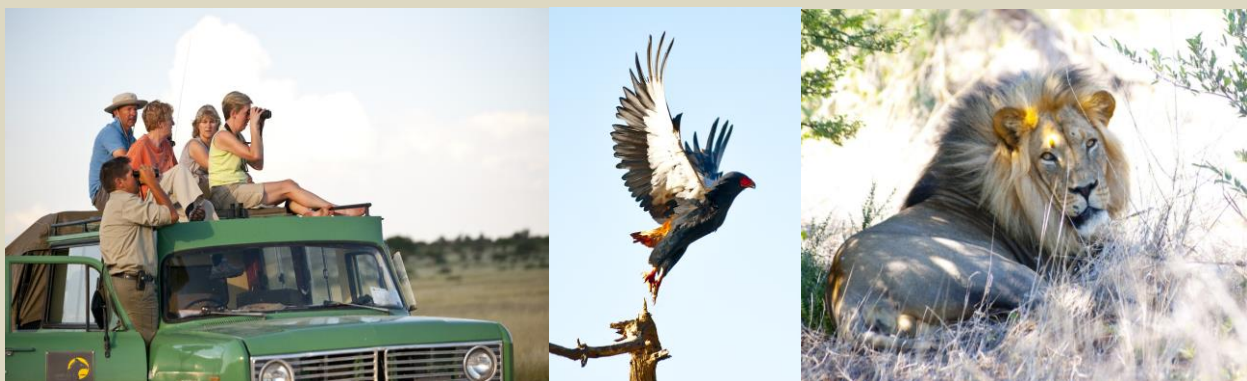
**Accommodation:** Passarge Valley

**Activities:** Game drives

## Day 2 Central Kalahari – Passarge Valley

Drive Boteti - Passarge (160 km, 6 hour drive)

Early morning and afternoon game drives in the valley in search of game. The area is also host to numerous bird species, and small raptors can often be seen in pursuit of their prey.



**Accommodation:** Passarge Valley

**Activities:** Game drives – desert explorations

### Day 3 Piper Pan

Drive Passarge - Piper Pan (130 km, 6 hour drive)

Today we travel south via a couple of vegetated pans to reach the remote Piper Pan in the early afternoon. Lunch served en route. We enjoy the peace and tranquillity around the campfire.



**Accommodation:** Piper Pan

**Activities:** Game viewing

### Day 4 Piper Pan

Morning and afternoon game drives and inbetween time to relax, have a shower or read a good book whilst contemplating the magnificent desert views.



**Accommodation:** Piper Pan

**Activities:** Game viewing

### Day 5 & 6 Deception Valley

Drive Piper - Deception Valley (100 km, 3 hour drive)



After breakfast we make our way due northeast via Lethiau Valley to reach Deception Valley in the afternoon. We spend these two days exploring Deception Pan, and the adjoining pans. This area is home to a number of Kalahari animals such as springbok, gemsbok, red hartebeest, brown hyena and lion, which we should see on our morning and afternoon game drives.

**Accommodation:** Deception Valley

**Activities:** Game viewing



## Day 7 Maun

Drive Deception Valley - Maun (220 km, 5 hour drive)

---

Drive back from the Central Kalahari to Maun today. Your guide will drop you at your Bed & Breakfast in Maun for an afternoon at leisure.

**Accommodation: Maun in a Bed & Breakfast**

## Day 8 Xakanaxa, Okavango Delta

Scenic charter to Xakanaxa (30 mins)

---

A Penduka Safaris representative will pick you up from your hotel for your transfer to the Maun Airport, most probably by around lunchtime.

You will be shown to your light aircraft for your flight to the Moremi Game Reserve. Upon arrival at the Xakanaxa airstrip you will be met by your guide.

A large variety of game can be found along the rivers and floodplains of the Okavango, herds of red lechwe, buffalo and hippo are commonly seen. During midday we may encounter some breeding herds of elephants coming to drink along the rivers.

Moremi is well known for its wild dog population; lions, leopard and cheetah are also frequently seen. We are in our camp in the late afternoon, in time to be shown to tents. Time to shower before dinner served in dining tent.



**Accommodation:** Moremi Game Reserve, Xakanaxa in wild campsite

**Activities:** Game drives, scenic light aircraft flight over the Okavango Delta

## Day 9 Xakanaxa, Moremi Game Reserve

---

Early morning coffee or tea, and we set off on a full morning's game drive to return to camp at about 11h00 for a delicious brunch. Time now to shower, rest and relax in camp. After tea we set off on our afternoon game drive through Moremi with its wilderness of rivers and lagoons.

We take a motorboat cruise on the Xakanaxa lagoon or Mboma waterways to visit the famous heronries of the eastern Okavango. Return to camp and relax around the campfire. Dinner served in dining tent.



**Accommodation:** Xakanaxa

**Activities:** Game viewing, motorboat cruise on the Xakanaxa Lagoon

### Day 10 Khwai, Moremi Game Reserve

Drive Xakanaxa to Khwai (50 km, 4 hour drive)

Having had breakfast we leave Xakanaxa and continue on an interesting riverine route through Moremi to arrive and set up camp within sight of Khwai River at Moremi's North Gate.



**Accommodation:** Moremi Game Reserve, Khwai in wild campsite

**Activities:** Game viewing

### Day 11 Khwai, Moremi Game Reserve

Early morning and afternoon game drives exploring the Khwai River area should reveal a variety of game. Dombo Hippo Pools offer beautiful sunsets and plenty of Hippo.

During the heat of the day you will have a chance to read, relax and enjoy the sounds of the wild, followed by afternoon tea and a sunset game drive.



**Accommodation:** Moremi Game Reserve, Khwai in wild campsite

**Activities:** Game viewing



## Day 12 Savuti

Drive Khwai to Savuti (100 km, 5 hour drive)

An early morning game drive to have one last look at the Khwai, before returning to our camp for breakfast. We leave Moremi and our route takes us on an interesting day's drive northwards to Savuti. We stop en route for lunch. On the way to Savuti we pass over the Mababe depression, once a vast lake, here in summer months the zebra migrates from the Northern Chobe via Savuti and Mababe to Makgadigadi Pans. Approximately 20 000 zebras make this annual migration.

The Savuti channel and marsh have been dry since 1980 and finally received water again in 2009. The marsh is now partially covered in water and attract large concentrations of game and birds. Time will now tell how the water will influence the famous Savuti bull elephant population which it is well known for.



**Accommodation:** Savuti in wild campsite

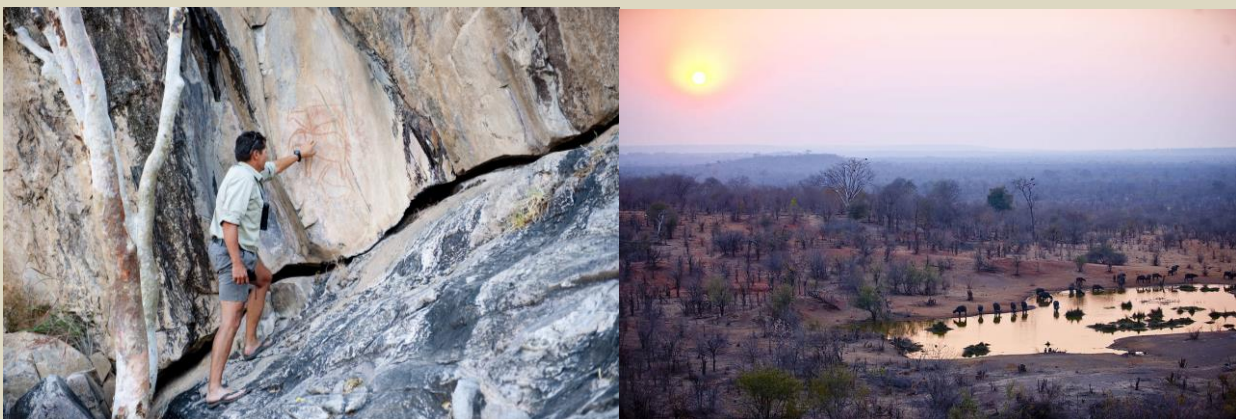
**Activities:** Game drives

## Day 13 Savuti

We depart on an early morning drive in search of the Savuti predators. Savuti has been host to most of the amazing wildlife documentaries filmed in the last 25 years. Many about the merciless competition between the different predators.

Savuti also have a few rocky outcrops enabling us to see the Klipspringer antelope. There is also a small collection of Bushmen rock art.

Morning and afternoon game drives with leisure time to relax during the heat of the day.



**Accommodation:** Savuti in wild campsite

**Activities:** Game drives

## Day 14 & 15 Chobe National Park

Drive Savuti to Chobe (180 km, 5 hour drive)

After breakfast we leave for the Chobe River and we should see the breeding herds of elephant and large herds of buffalo for which this park is famous. Chobe riverfront is without a doubt one of the best game viewing spots in Southern Africa. In a afternoon it is possible to see more than a thousand elephants and buffalo. Shy antelope species like the Chobe bushbuck, Roan and Sable antelope can also easily be

seen. Along the Chobe floodplains is also a small population of Puku antelope common on the floodplains of Zambia.

If you are a keen birdwatcher, Chobe will not disappoint, huge amounts of water birds congregate here especially in the summer months. In the afternoon on the second day, a boating excursion on the Chobe River offers a new dimension to game viewing. Camp along **Chobe** floodplains in exclusive wilderness area.



**Accommodation:** Chobe National Park in wild campsite

**Activities:** Game drives, Chobe River sunset cruise

## Day 16 Depart

Drive Chobe to Kasane (50 km, 2 hour drive)

After a leisurely breakfast, we pack up and slowly make our way out of Chobe National Park towards the town of Kasane, from here it is time to bid farewell and get transferred to Livingstone. (A 90 minutes transfer by road) Your transfer company will drop you off at the Airport in time for your international flight.

**(Visa and departure taxes are for own account)**

**End of the safari**

## **Please note**

- Penduka Safaris reserves the right to amend itineraries last minute if it is to the benefit of the clients. Amendments can also be necessary subject to the availability of campsites.
- Bookings are confirmed upon receipt of 20% non-refundable deposit, the balance is due 6 weeks before departure.
- Prices are subject to alteration if the Botswana Government increases park fees,

For further information please consult our SAFARI FACT SHEET or [www.pendukasafaris.com](http://www.pendukasafaris.com)

**Additionally to our set-departure mobile safaris in Botswana and Namibia we also offer special interest mobile safaris (photography, birding, cultural, desert expeditions), private or tailor-made mobile safaris, luxury mobile safaris and private guided fly-in safaris throughout Southern Africa – Zambia, Namibia, Botswana and South Africa. The pilot-guide on the private guided-fly in safaris is Willem Barnard of Penduka Safaris.**

**Set-departure safaris can also be booked for private groups on exclusive basis either in standard or luxury tented accommodation. Cost on application.**

## **Penduka Safaris Est. 1963**

Safari pioneers by nature, Penduka Safaris was established back in the 1960s by Izak Barnard and is the oldest mobile safari operator in Southern Africa. After 50 years in business the company remain true spirited pioneers and worthy leaders in mobile safari expeditions and Transfrontier safaris through Southern Africa. Penduka specialises in expedition-style mobile safaris to more remote and off-the-beaten-track destinations such as Zambia, Namibia, Central Kalahari, Kgalagadi Transfrontier Park and Botswana and is renowned for their desert and cultural safaris (Kuomboka, Bushmen and Himba safaris). Over 8 decades of accumulated hands-on know-how, history, intimate knowledge, passion and appeal for the bush, the people, fauna and flora have been passed on through each generation as the family has been involved in wildlife since the early 19th century.



Today Willem Barnard and his British wife Sally are running Penduka Safaris and the company is based in Maun. Having guided safaris in Southern Africa for over 30 years, Willem is not only a safari guide of note but also a charismatic host, raconteur, hands-on-owner, experienced bush pilot, photographer and avid birder.

### **Penduka Safaris**

E-mail [info@pendukasafaris.com](mailto:info@pendukasafaris.com)

Reservations Tel + 264 (0)61 239 643, Fax: +264 (0)61 259 316

Head Office & Operations: Tel +267 686 4539, Mobile: +267 71300215

[www.pendukasafaris.com](http://www.pendukasafaris.com)